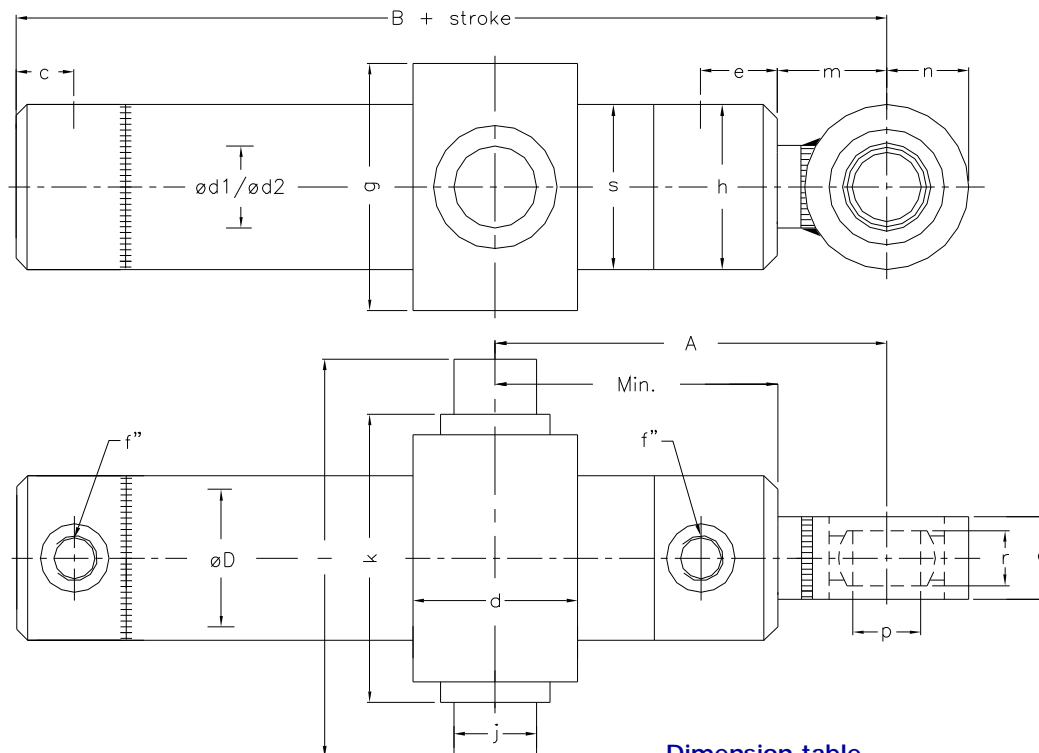


## SR20 BL cylinders



Dimension table

<b>øD</b>	<b>32</b>	<b>40</b>	<b>50</b>	<b>63</b>
<b>ød1/ød2</b>	16	20/25	25/30	30/40
<b>B</b>	147	163	193	209
<b>Min.</b>	85	90	110	125
<b>c</b>	16	17	21	22
<b>d</b>	40	50	60	70
<b>e</b>	24	25	28	28
<b>f''</b>	1/4"	3/8"	3/8"	3/8"
<b>g</b>	50	60	90	94
<b>h</b>	50	50/55	60	75
<b>j</b>	20	20	30	35
<b>k</b>	52	70	105	105
<b>l</b>	92	98	145	155
<b>m</b>	29	35	40	45
<b>n</b>	19	25	30	35
<b>p</b>	15	20	25	30
<b>q</b>	20	25	30	35
<b>r</b>	15	16	20	22
<b>s</b>	40	50	60	75


### How to order:

SR20 BL x1 / x2 \* x3 K A = x4 

x1: Inside diameter : 50 mm  
 x2: Piston rod : 30 mm  
 x3: Stroke : 500 mm  
 x4: A = Distance : 250 mm

Ordering code: SR20 BL 50/30\*500 K  
 A=250 mm

### Eksempel på ordre:

SR20 BL x1 / x2 \* x3 K A = x4 

x1: Indvendig diameter : 50 mm  
 x2: Stempelstang : 30 mm  
 x3: Slaglængde : 500 mm  
 x4: A = Distance : 250 mm

Ordre kode: SR20 BL 50/30\*500 K  
 A=250 mm